

**NEW!**

# RWC5020M LoRaWAN Tester



**LoRaWAN**<sup>®</sup>

Low Priced LORA Test Solution

Starting from  
**USD 4,000**

 **RedwoodComm**

# Key Features

## LoRaWAN Compliance

- EU868, US915, EU433, AU915, CN470, AS923, KR920, IN865 and RU864
- LoRaWAN V1.0.x/V1.1.x and Class A/B/C

## Protocol & Functional Test

- LoRaWAN Pre-Certification Tests - EU, US/CA, AS, KR and IN
- Scenarios for transmission of MAC commands and user application data
- FUOTA Test with user firmware binaries

## RF Performance Test

- TX Power/Frequency and RX Sensitivity for End-device & Gateway
- Semtech's Non-regression Tests (with RWC2020A)
- LBT Test (with RWC2020A)

## Manufacturing Test

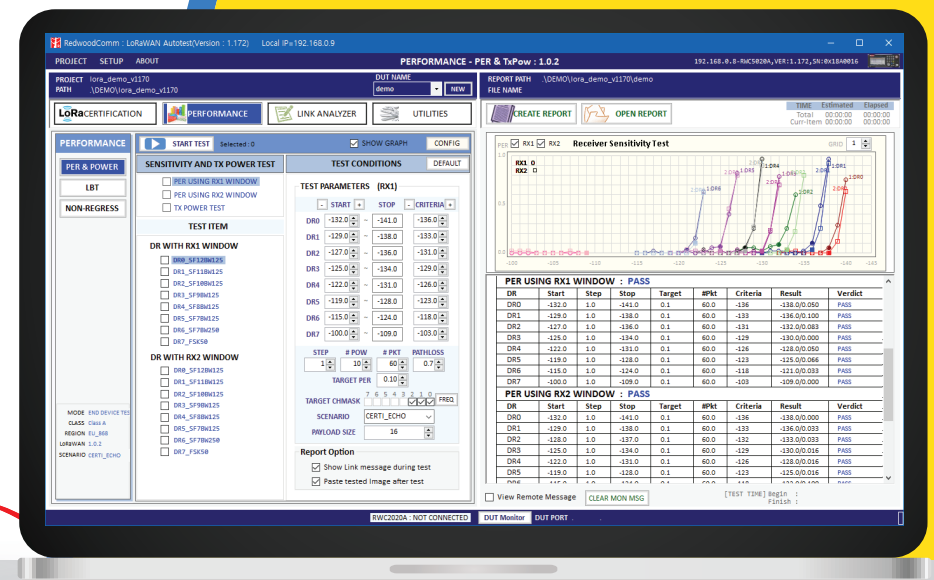
- Separate TX/RX Tests with DUT controls - power, frequency and sensitivity
- Simultaneous TX/RX Tests (MFG) without wired DUT controls

## Specification

- Frequency : 400MHz to 510MHz, 862MHz to 960MHz
- Output Power Level : 0dBm to -150dBm
- Dimension : 200(w) x 70(h) x 220(d) mm
- Interface : Ethernet, RS-232C
- Power Input : DC 12V/3A
- Weight : 2.2kg



Ethernet



The RWC5020M is a compact all-in-one LoRa/LoRaWAN tester, which offers most of the industry-leading features of RWC5020B at a very attractive price. It supports both engineering and manufacturing tests with a single tester: RF Performance, LoRaWAN Pre-certification, Firmware Update Over The Air (FUOTA), and more. When combined with the RWC2020A Interference Generator, RWC5020M can test Listen-Before-Talk (LBT) performance of your Device or Gateway; gateways can also be tested with Semtech's Gateway Non-regression Test.

For more information  
[www.redwoodcomm.com](http://www.redwoodcomm.com)  
[sales@redwoodcomm.com](mailto:sales@redwoodcomm.com)